

 +91 95021 79931

 www.tangadeveloper.com

more
open
more
green





Wake up to the drizzle of lush greenery, and a blue lake!

Glorious
open spaces and **Life**
by the **lake front**

A magnum opus in terms of its scenic beauty, "The Drizzle" has a captive lake alongside the massive open grounds dedicated to water side park development and an unimaginable life that spurs around it. It's a luxury unparalleled by the openness and greens that it offers for a distinguished lifestyle to thrive.



6

TOWERS

2

BHK

2.5

BHK

3

BHK

2

CLUB HOUSES

STRUCTURE

MIVAN STRUCTURE,
SHEAR WALL
TECHNOLOGY



Live by the waterfront

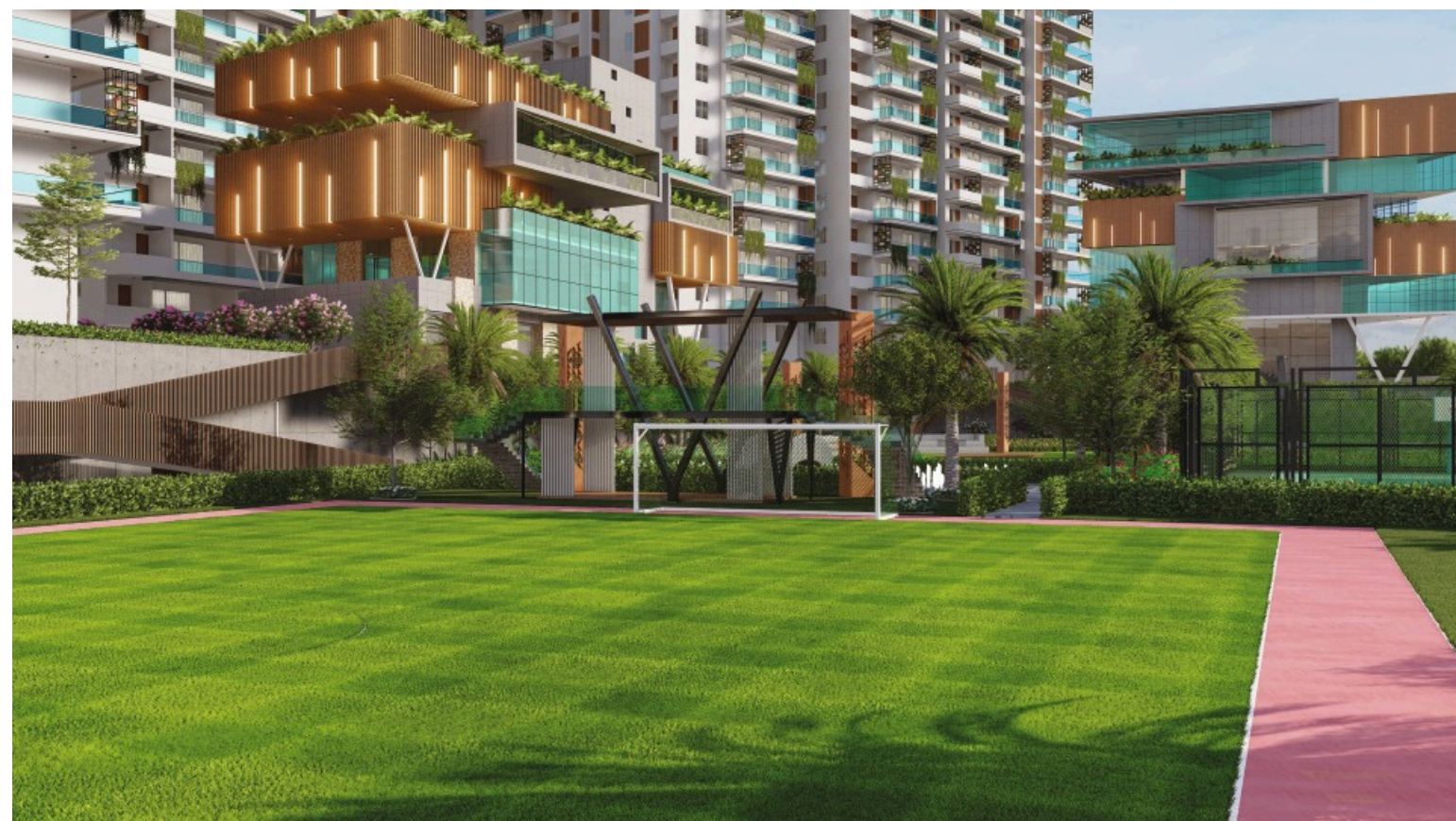
where
**massive
open scapes**
define the new

3+
acres of
**openness &
greenery** ●●

The grand experience of entrance plaza invites you to live your dreams within.



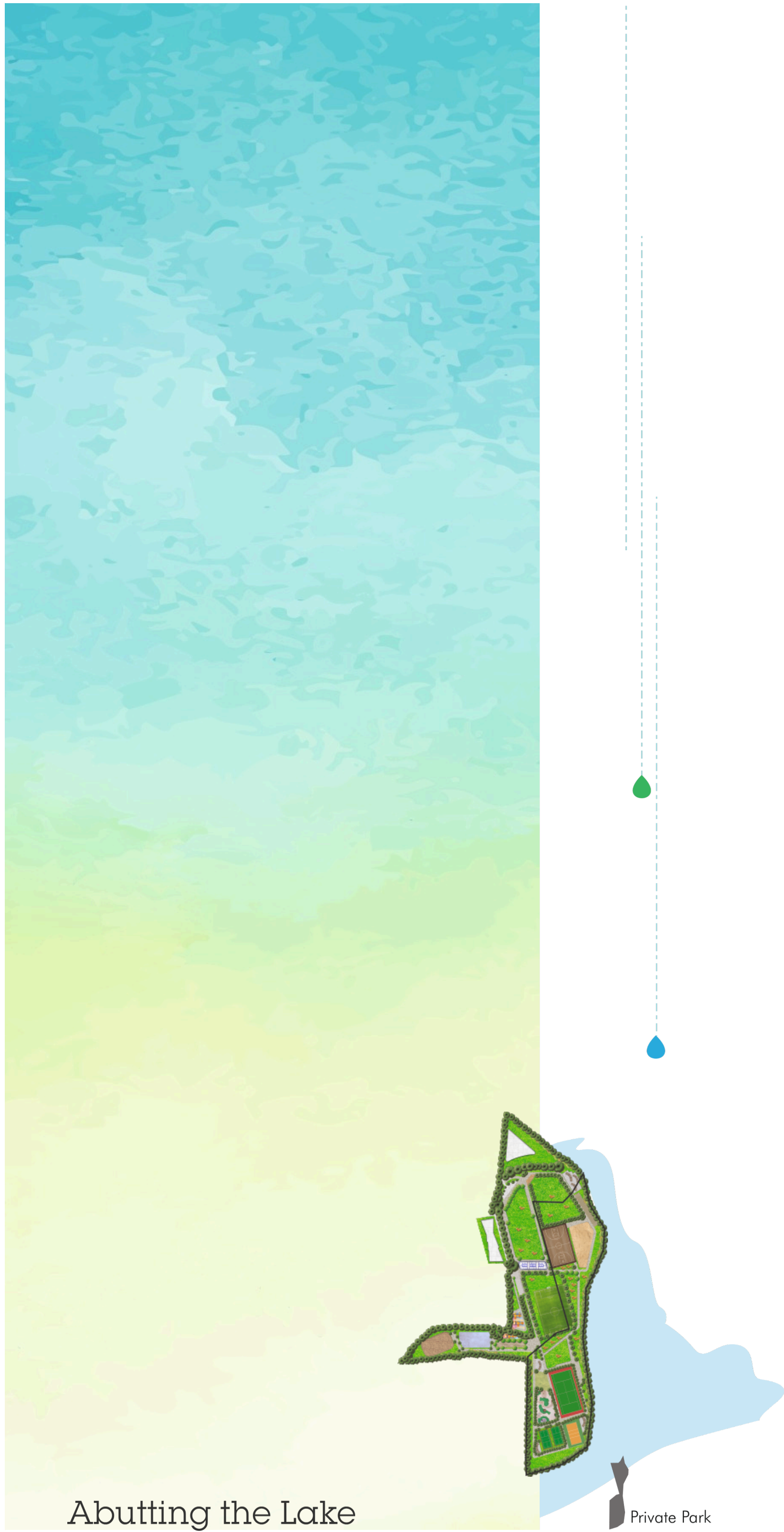

TANGA DEVELOPER
YOUR REAL ESTATE PARTNER



Two Clubhouses
and massive open areas &
amenities to enjoy 💧💧

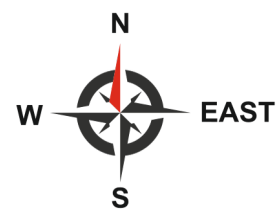


- Double Height Entry Lobby
 - Banquet Hall
 - Mini Banquet
 - Gym
 - Outdoor Gym
 - Smoke Zone
 - Yoga
 - Indoor Games
 - Air Hockey
 - Billiards
 - Chess
 - Games
 - Party Lawn
 - BBQ
 - Group Learning Activity Room
 - Changing Rooms
 - Lockers
 - Swimming Pool
 - Kids Pool
 - Pool Deck
 - Open Showers
 - Creche
 - Squash Court Below
 - Clinic and Pharmacy
 - Boutique Store
 - 2 Preview Theatres
 - Salon
 - Spa
 - Aroma Garden
 - Cards Room
 - Conference
 - Kitty Area/Toddler Space
 - Gaming Zone
 - VR Gaming/Play station
 - Co-Working Space
 - Guest Rooms
 - Service Area
 - Association Office
-
- Lawns
 - Connecting Pathways
 - Tennis Court
 - Multiple Badminton Courts
 - Volleyball Court
 - Cricket Pitch
 - Children's Play Area (Sand Bed)
 - Basketball Court
 - Pets Park
 - Grid Planting with Seating Plaza
 - Gazebo
 - Mini Golf Court
 - Football Court



Abutting the Lake

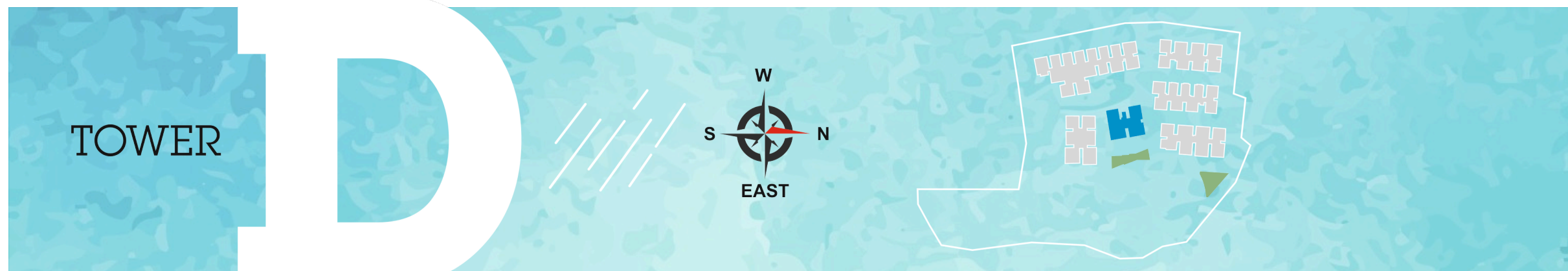
Private Park



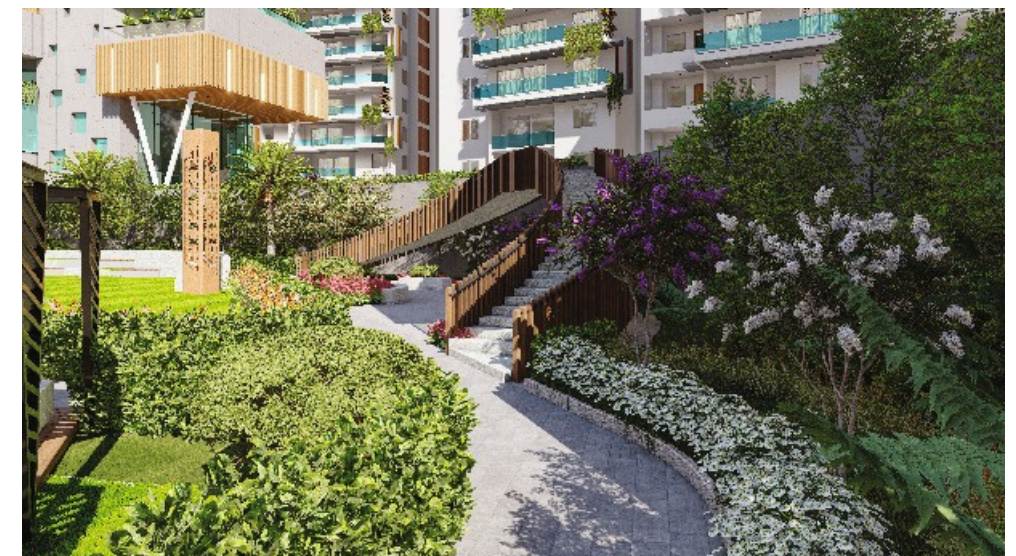








life comes alive with a plethora of unlimited activity scapes to indulge in.







Location

(Not to scale)



1

Minute
Malls & Multiplex
Parks & Recreation
Facilities

2

Minute
ORR Narsingi Exit
Upcoming Metro
Engg. Colleges

5

Minute
International Schools
Divyasri SEZ
Hospitals

7

Minute
Financial District
Kokapet

10

Minute
Gachibowli
Bio Diversity Jn

15

Minute
Hitech City
Metro Station

A location
that can't get
better than this

**The
drizzle**
LIVE AMAZING @NARSINGI

SPECIFICATIONS

STRUCTURE

- R.C.C. framed structure to withstand wind & seismic loads.
- R.C.C. shear wall structure to withstand wind & seismic loads.
- Concrete blocks for non-structural members.

PAINTING

- Internal: 2 coats of emulsion paint over putty finished surface/ primer coat.
- External: Texture finish and weatherproof emulsion paint or any other finish as per the architect's design.

FLOORING

- Living, drawing, dining, all bedrooms & kitchen.
- 800mm X 800mm size double charged vitrified tiles.
- Bathrooms: Acid-resistant, anti-skid ceramic tiles.
- All Balconies: Ceramic tiles.
- Corridors: Vitrified tiles.

KITCHEN

- Provision for municipal & borewell water connection.
- Provision for water purifier.
- Provision for chimney.
- Provision for dishwasher.

UTILITY

- Provision for washing machine.
- Glazed ceramic tiles dado up to 3ft height.

BATHROOMS

- Wash basins, EWC, concealed system, single lever CP fittings of reputed brands.
- Provision for fixing geysers.
- Glazed ceramic tile dado up to 7ft height.

DOORS

- Main Door: Manufactured Teak wood frame with flush shutter of melamine matt polish, fixed with reputed make hardware.
- Internal Door: Manufactured hardwood door frames & laminated shutters, fixed with hardware of reputed brand.
- French Doors: UPVC sliding door of glazed unit of 3 track frame with provision for mosquito mesh.

WINDOWS

- UPVC window of glazed unit as per the architect's design.

ELECTRICAL

- Concealed internal wiring with fire retardant.
- PVC insulated copper wires for all points.
- Modular type switches and sockets.
- Light/Fan points in every room as per architect's design.
- Power points in kitchen for dishwasher/grinders/mixers/cooking range/exhaust chimney/ microwave etc. and in wash area for washing machine as per the architect's design.
- Exhaust fan provision in toilets.
- Electrical provision in all bedrooms for split air-conditioners.
- No provision for window air-conditioners.
- Separate metering for each unit for normal supply and DG supply.
- Earthing for every unit as per standards.
- 3 phase power connection of required load for each unit depending on size of apartment.
- Copper piping for A/C's will be charged extra as per actuals.

TELECOM/ INTERNET/ CABLE TV

- Telephone point in living room.
- Intercom facility in all flats.
- Provision for cable connection in drawing room, living room & all bedrooms.
- Provision for internet connection in living room.

LIFTS (Passenger & Service)

- Reputed make automatic lifts.

GENERATOR

- 100% DG set back up with acoustics enclosure and AMF.

FIRE SAFETY & GAS

- Supply of piped gas, subject to feasibility in all flats.
- Fire safety features as per fire department norms & regulations.

WTP & STP

- Sewage Treatment Plant as per norms provided inside the project. Part of the treated sewage water will be used for the landscaping and flushing purpose.
- Treated water made available through an exclusive water softening and purification plant.

SECURITY/BMS

- Solar powered security fence for total compound wall.
- 24/7 security guards.
- Surveillance cameras at the main security and entrance of each block & Clubhouse to monitor.