

Rising high with incredible views, realise the perspective of quality living complemented by pristine environs and luring facilities



## EXPERIENCING THE HIGHEST OCTAVE OF COMFORT

### ARCHITECTURAL FEATURES

- Well-integrated and spacious living spaces
- Planning optimization for enhanced daylight and ventilation
- Wide balconies
- Spacious corridors and large gaps between buildings
- Specially designed children's waiting lounge at gate for school bus access

### LANDSCAPING

- Well-designed gardens and tot-lots
- Play zone areas for all age groups
- Toddler's park, mounds with slides & sand pits
- Meditation plaza
- Open and covered sit-outs & decks
- Feature walls and yoga decks
- Pavilions / sit-outs
- Sloped lawns / featured garden
- Feature wall with sculpture



## SPORTS AND GAMES FACILITIES

- Jogging/walking track
- Cycling track
- Practice pitch for cricket
- Half-basketball court
- Mini skating rink
- Volleyball court
- Mini soccer/ multi-purpose court
- Indoor badminton court
- Indoor squash court
- Rock climbing
- Indoor games

## RESPONSIBLE LIVING

- Harnessing solar energy for water heating purpose
- Energy efficient fixtures and equipment
- Water efficient landscape & rainwater harvesting
- Tobacco smoke control
- Cycle parking provision at selected locations
- Provision of metered charging point for electrical vehicles on a chargeable basis.



**CLASSIC NOTE OF BLISSFUL LIVING**



## FINEST TWIN CLUBHOUSES

Not one, but two niche clubhouses make the choice broader, besides pampering you and your guests with full-fledged recreation, rejuvenation and revelry.

## TOUCH OF CLASS & CREATIVITY

The lavish sizes with ideal ventilation align well with scintillating facilities powered by technology, high-end security and seamless vistas that accentuate the feel of wonderful lifestyle.



2 Independent Clubhouses  
about 42,000 Sft



Well designed,  
Air-conditioned Gym



Yoga / Meditation /  
Aerobics Hall



Indoor Badminton Court



Party Lawn



Indoor Squash Court



Indoor Games Chess,  
Carroms, Table Tennis, etc.,



Air-conditioned  
Guest Rooms



Multipurpose Party Hall /  
Banquet Hall



Outdoor Swimming  
Pool & Children's Pool



Space for Terrace  
Cafeteria



Space for Crèche



Space for Supermarket,  
Shops / ATM



Space for Children  
Gaming Zone



Space for Clinic/  
Pharmacy



Space for Private  
Home Theatre



Space for Saloon & Spa



Space for Outdoor  
Snack Bar



Meeting Hall &  
Admin Office

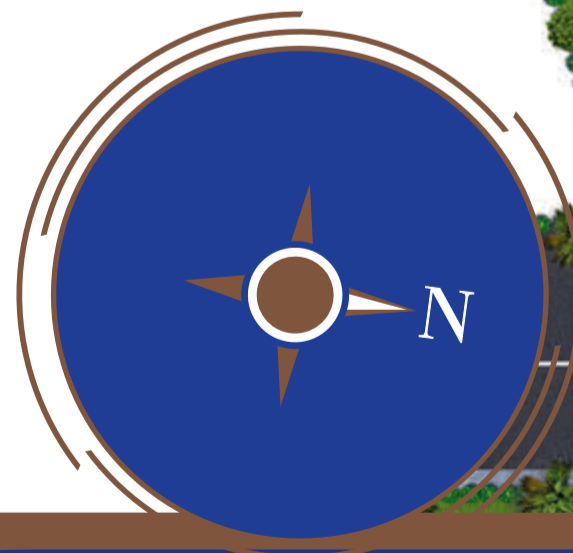


Guest Parking

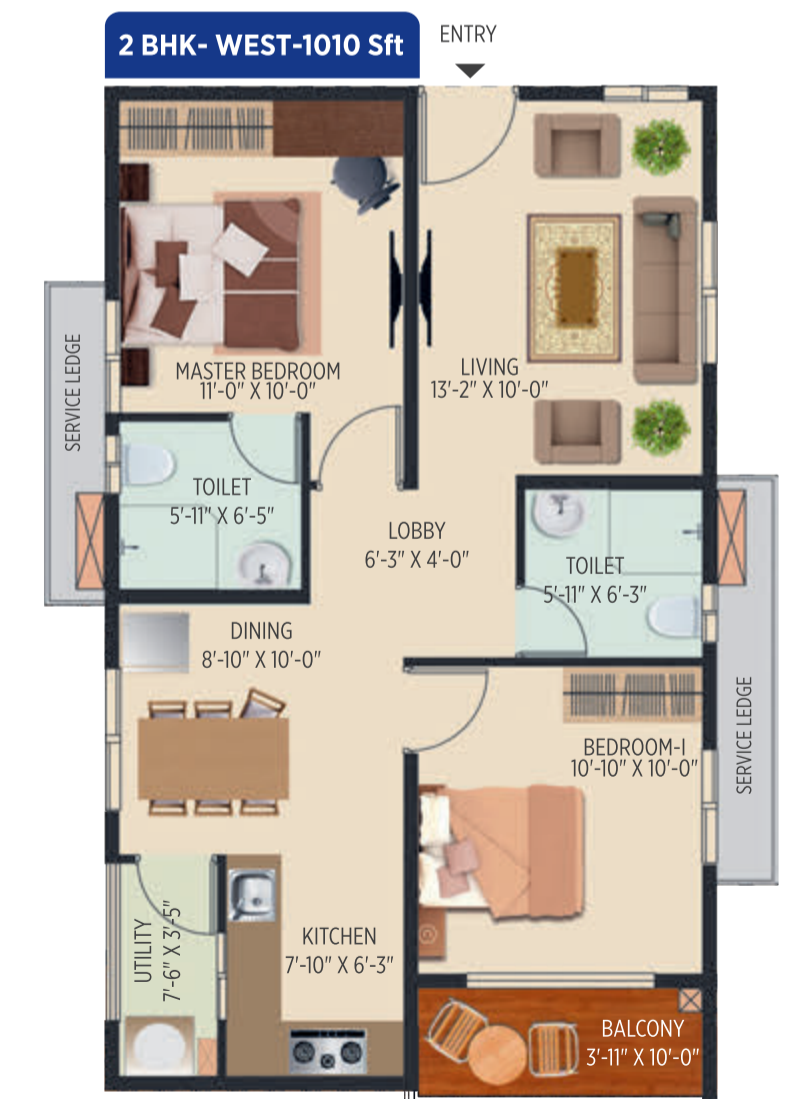
# THE MASTERPIECE IN THE MAKING

This project is a one-of-its-kind masterpiece, with its majestic grandeur spreading across seven royal towers.

- |                   |                          |                                     |                           |                         |                            |
|-------------------|--------------------------|-------------------------------------|---------------------------|-------------------------|----------------------------|
| 1 Main entry      | 8 Waiting area           | 15 Kids waiting area for school bus | 22 Covered walkway        | 29 Mini football court  | 36 Half-basketball court   |
| 2 Security room   | 9 Exit gate              | 16 Maids / vendors entry            | 23 Garden                 | 30 Cricket nets         | 37 Mini skating rink       |
| 3 Outdoor seating | 10 Transformer yard      | 17 Amphitheatre                     | 24 Pebble path            | 31 Children's play area | 38 Cycle stand             |
| 4 Outdoor gym     | 11 Waste management area | 18 Nala                             | 25 Open seating           | 32 Grand walk           | 39 Clubhouse               |
| 5 Pergola         | 12 Two-wheeler parking   | 19 Party lawn                       | 26 Rock climbing          | 33 Sand pit             | 40 Basement entry          |
| 6 Labyrinth       | 13 Courier bay           | 20 Snack bar area                   | 27 Sand pit for adventure | 34 Piano court          | 41 Swimming pool           |
| 7 Gas bank        | 14 Bus platform          | 21 Meditation zone                  | 28 Volleyball court       | 35 Toddler's play area  | 42 Cycling & jogging track |

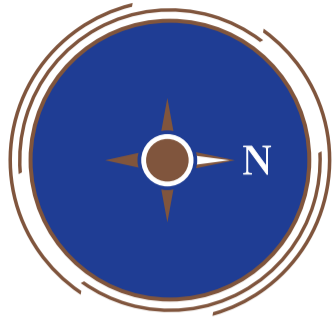


# UNIT PLANS



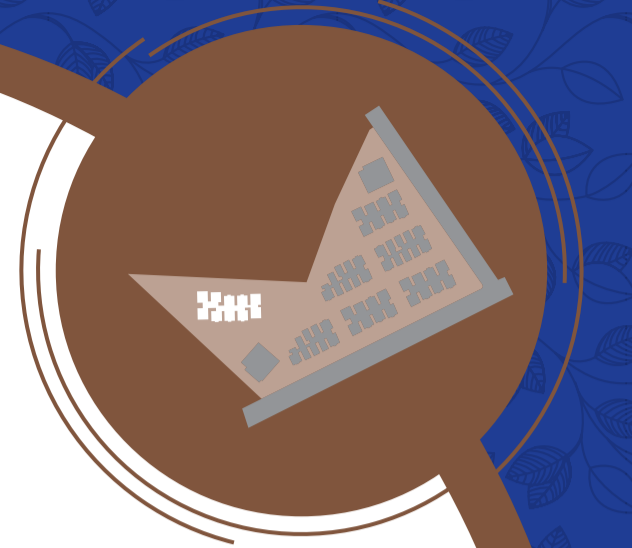
**Note:** 1655 Sft is replica of 1725 Sft Floor plan except Bedroom - II Balcony.

**Note:** All dimensions shown in the floor plans are wall to wall only. The actual dimensions may vary slightly from the dimensions shown, due to wall finishing thickness.

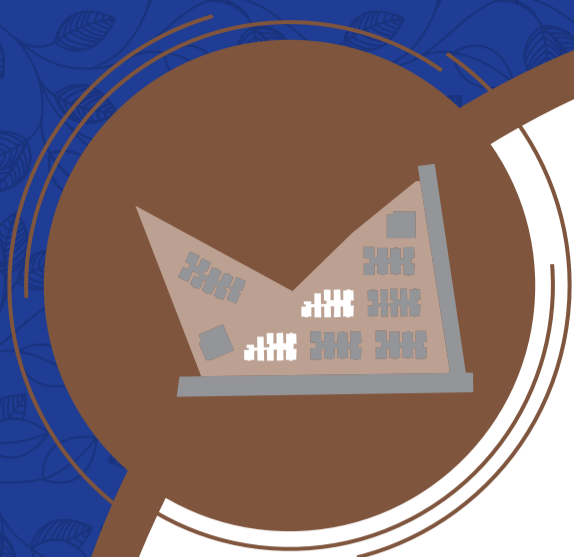


# TOWER - A

(Typical Floor Plan)

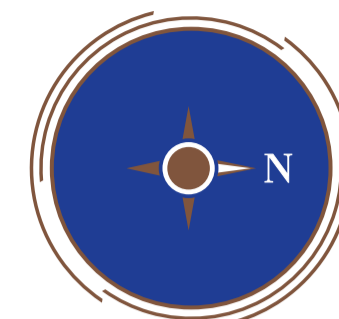


**Note:** All dimensions shown in the floor plans are wall to wall only. The actual dimensions may vary slightly from the dimensions shown, due to wall finishing thickness.

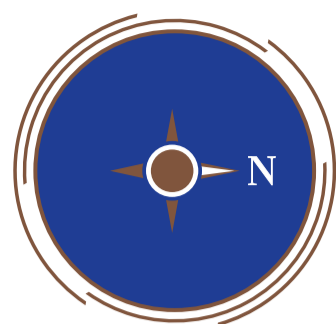


# TOWER - B & C

(Typical Floor Plan)

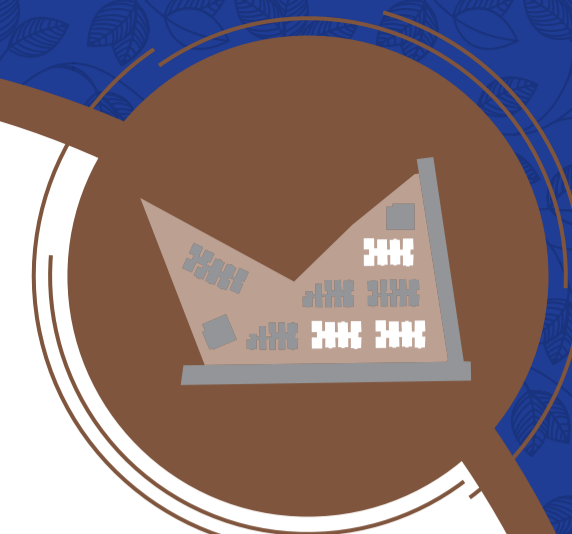


**Note:** All dimensions shown in the floor plans are wall to wall only. The actual dimensions may vary slightly from the dimensions shown, due to wall finishing thickness.

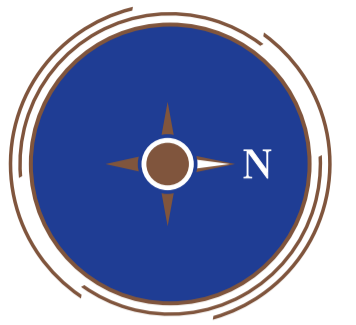
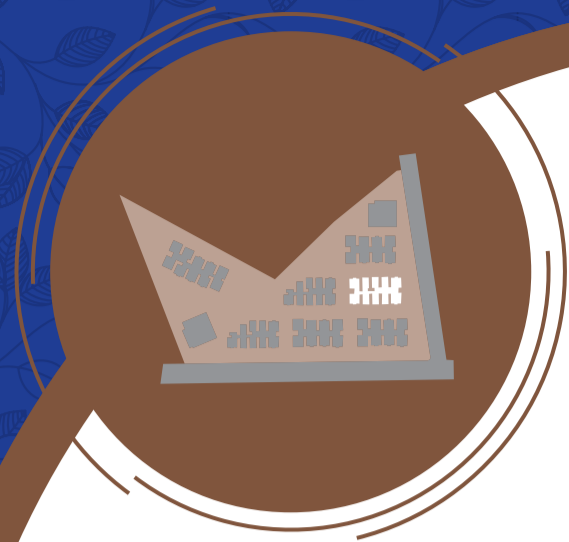


# TOWER - D, E & G

(Typical Floor Plan)



**Note:** All dimensions shown in the floor plans are wall to wall only. The actual dimensions may vary slightly from the dimensions shown, due to wall finishing thickness.



# TOWER - F

(Typical Floor Plan)



**Note:** All dimensions shown in the floor plans are wall to wall only. The actual dimensions may vary slightly from the dimensions shown, due to wall finishing thickness.

# SPECIFICATIONS



## STRUCTURE

- RCC shear wall framed structure to withstand wind and seismic loads with aluminium shuttering/formworks. Concrete blocks for non-structural members (wherever needed).



## DOORS & WINDOWS

- **All Doors:** Manufactured / Engineered Frame & Engineered shutter aesthetically designed and fixed with reputed brand hardware.
- **Windows & French Doors:** UPVC/ Aluminium alloy sliding door and windows with track for mosquito mesh of reputed brand.



## FLOORING

- **Living, Dining, Kitchen, Master Bedroom & Other Bedrooms:** 800X800mm size double charged vitrified tiles of reputed brand with spacer joint.
- **Balconies:** Matte finish /anti-skid ceramic tiles with spacer joint of reputed brand.
- **Toilets:** Designer ceramic tile dado with spacer joint up to door height and flooring with matte finish /anti-skid ceramic tiles.
- **Utility:** Glazed ceramic tile dado with spacer joint up to 3' height with matte finish ceramic tile flooring.
- **Common Areas:** Vitrified tiles flooring of reputed brand.
- **Staircase:** Kota / Tandur Stones.



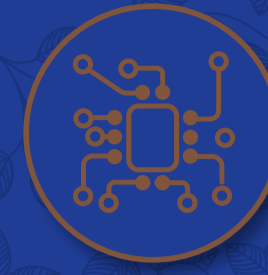
## PAINTING

- **Internal Walls & Ceiling:** Smooth putty finish with 2 coats of premium acrylic emulsion paint of reputed make, over a coat of primer.
- **External Walls:** Combination of texture, bubble spray or putty with two coats of exterior emulsion paint & weather proof paints of reputed brand.



## TOILETS

- **CP Fixtures:** CP Fittings of Jaquar/ Grohe or equivalent. Single lever hot and cold mixtures with shower in every toilet. Single lever hot and cold mixture for wash basin in Master Bedroom toilet and pillar cock for wash basin in other bedroom toilets.
- **Sanitary Fixtures:** Sanitary fixtures of Jaquar/Parryware/Hindware/Cera or equivalent.



## ELECTRICAL AND COMMUNICATIONS

- ISI mark concealed copper wiring with good quality Modular Switches of Reputed brand.
- Power outlets for Geysers in all Bathrooms.
- Power plug for Chimney, Refrigerator, Microwave, Mixer Grinder, Water Purifier in Kitchen.
- Power points for ACs at fixed locations in the master bedroom and bedroom-I.
- Provision of electrical piping for power points of ACs at fixed locations in bedroom-II and living room.
- TV, Telephone / Internet Provision in Master Bedroom and Living Room.



## SECURITY

- Secured perimeter wall with solar fencing.
- 24/7 security at the gates.
- CCTVs at Gates, Stilt Floor, Cellars and Clubhouse.
- Appo-Based movement control for visitors, maids and vendors.



## POWER BACKUP

- Metered / Chargeable DG backup for Lights, Fans and sockets up to 5 Amps.
- 100% Power backup for essential services (lifts, WTP, STP & common areas).



## FIRE SAFETY

- Fire sprinkler system in all Corridors, Flats and Basements. Fire hydrant, Fire alarm and public address systems in all floors and parking areas (Basement). Control panel at Main Security.



## LIFTS

- Four high-Speed lifts for each Tower with Automatic Rescue Device. (8 to 16 passenger and fire lift)



## STP

- Sewage Treatment plant as per norms.
- Treated Sewage water will be used for Landscaping and Toilet flushing.



## LPG

- Supply of Gas from centralized Gas Bank to all individual flats with Prepaid Gas Meters.



## WTP

- Water Softener Plant for Borewell Water.